



ATLAS Data Link System
The New Dimension in Network-based
Operations – For all Nations

ADLiS

ATLAS Data Link System



... a sound decision

 **ATLAS ELEKTRONIK**

Network Centric Warfare – Information Dominance as a Key Factor for Increasing Mission Effectiveness.

The effectiveness of tactical data links is one of the strategic success factors in networked and joint operations.

The prime challenge is to give all participating units full information to meet the tactical situation and the requirements in near real-time for a common operational picture that can then be exploited to attain the highest possible level of strategic, operational and tactical objectives. In terms of battlespace advantages, the linking of people, platforms, sensors and weapons generates an increased speed of commands, a higher degree of self-synchronisation,

and a high tempo of operations. In sum: enhanced combat power. The unique characteristics and capabilities of the ATLAS Data Link System ADLiS in the automated transfer of data between highly mobile and stationary units makes it an indispensable building block for attaining information superiority and mission effectiveness with network centric operations.



ADLiS – the Enhanced Data Link Solution. With the First Complete STANAG-conformant Implementation of all Common NATO Link Protocols (Link 11/16/22/JREAP-C). Plus Forwarding Capability. Now with the New Non-NATO Protocol Link A.

The innovative ATLAS Data Link System ADLiS offers a degree of interoperability that is unprecedented in the market: coverage of all NATO Link channels (11, 16, 22 and JREAP-C), provision of the new Link A for non-NATO units as well as the unique ability to allow data exchange between all channels.

Thus ADLiS enables task forces to share one common operational picture – all information at the same moment for everyone in near real-time. The task forces get proven joint tactical data link capabilities comprising multiple data links, including Link 11, Link 16, Link 22, JREAP-C and SIMPLE. These include combat-proven command and control modules deployable on ships, submarines, land units and ground

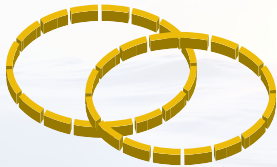
stations. ADLiS enables forces to exploit tactical data and other information to develop a new kind of intelligence. Absolutely reliable and secure. The system offers the opportunity of being a subsystem of the existing combat management system or a stand-alone link application. Or task forces can keep their existing link solution and expand it by ADLiS to interact with other link solutions.

ADLiS – boundless tactical information in near real-time.

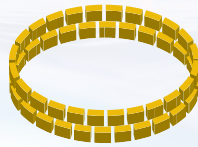
ADLiS

Multilink

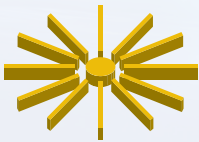
Link 22



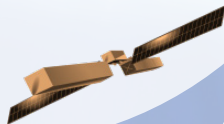
Link 16



Link 11

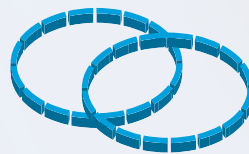


JREAP-C

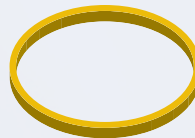


Multilink

ADLiS Link A



National Links

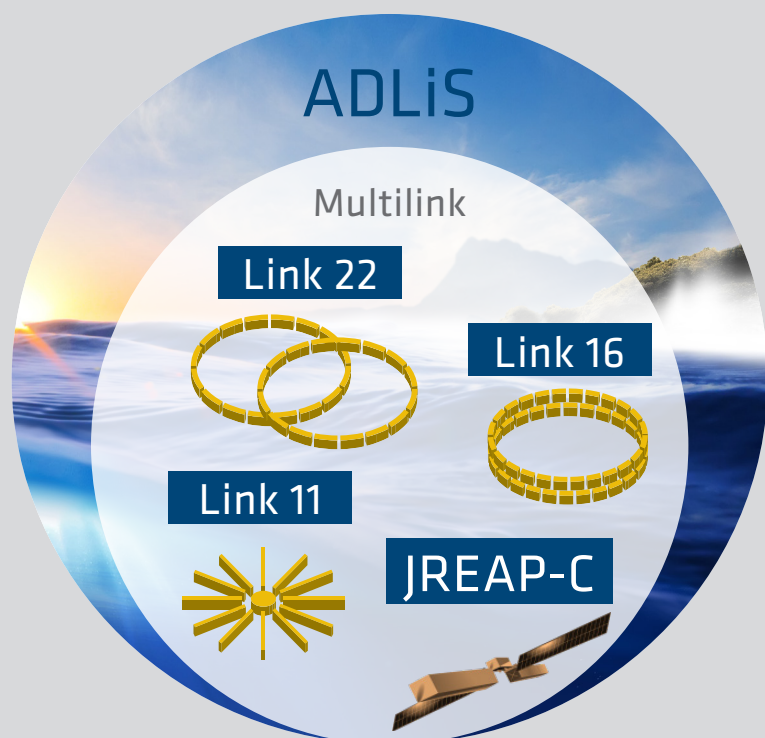


ADLiS – First Full Forwarding Capability Conform to Latest STANAG Rules.

The ADLiS data link solution provides an enhanced near-real-time operational picture in support of vital mission decisions. Worldwide, it is the first data link system enabling full forwarding capability conformant to the latest STANAG rules for all the commonly used NATO protocols Link 11, Link 16, Link 22 and JREAP-C.

Key features:

- ADLiS functions, fully STANAG-conformant, as
 - concurrent interface unit,
 - forwarding unit, or
 - single interface unit
- Latest STANAG edition applicable
- All channels served (single or multiple), including the forwarding between all NATO channels
- Provision of SIMPLE channels for Link 11, 16 and 22 for the simulation and for the point-to-point communication
- Common operational picture (COP)
- Link 16 via satellite (JREAP-C)
- Scalable system for single-channel as well as multi-channel operation
- Proven in various NATO operations
- Effective utilisation of COTS technology
- Flexible, open system architecture
- High reliability and secureness

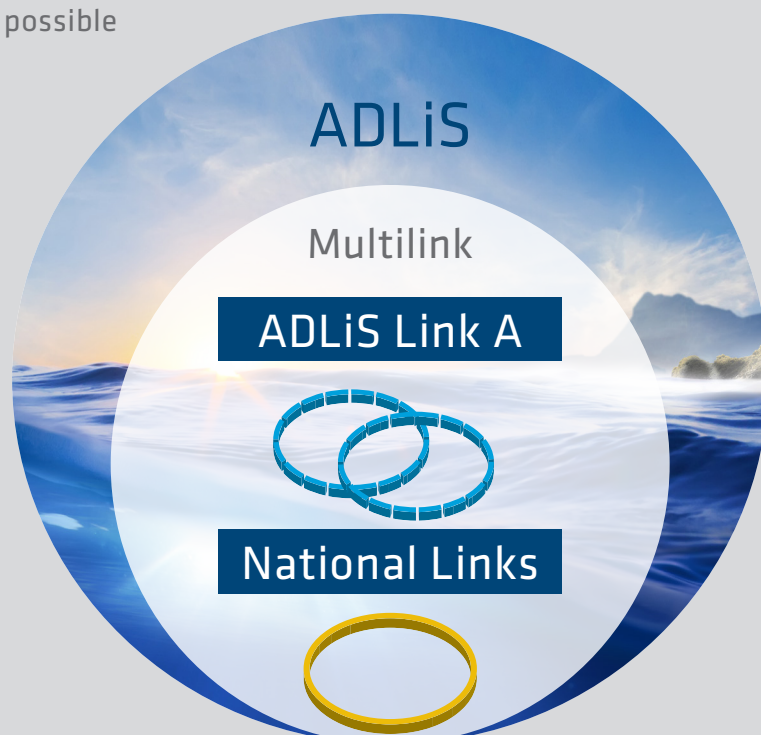


ADLiS Link A – Network Enabling Capability beyond NATO Operations.

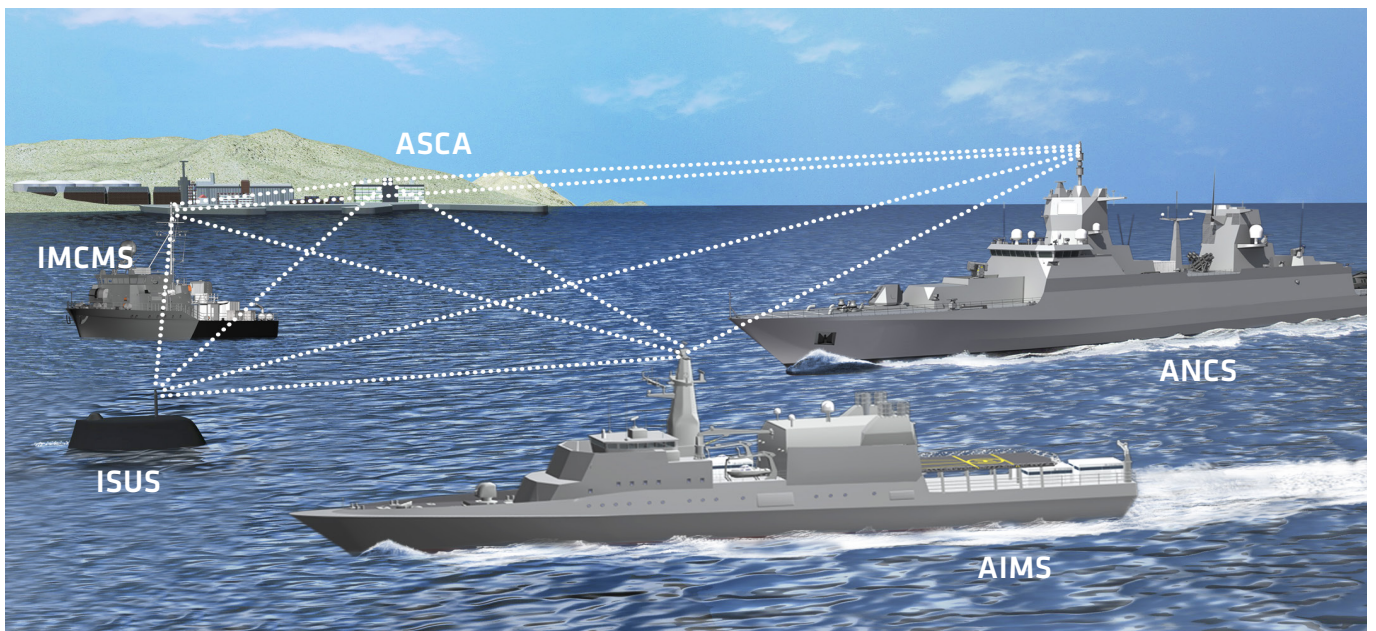
ADLiS Link A is a system developed for military applications beyond the NATO missions. Link A by ATLAS ELEKTRONIK is based on a modern cipher and modem technology, for reliable and secure data exchange.

Key features:

- Modern non-NATO data link without the need for configuration, even with untrained users, for establishing ad-hoc radio networks
- Utilisation of existing radios with data capability
- Forwarding possible to other national and commercial link implementations
- ADLiS Link A is available as a stand-alone version (with situation picture and link functions) and can thus be easily installed on board, without having to be integrated into a CMS
- HF/UHF/VHF frequency ranges possible
- Customisable:
 - Encryption to customers' requirements
 - Protocol extension
 - Transmission of photos / chat / email
- Link A enables the sharing of data between land and maritime assets
- Independent communications network
- Automatic network configuration
- Range extension by automatic routing & relay
- Link operation also via satellite



An Integrated Solution of ADLiS is Available for all ATLAS Combat Systems.



ISUS (Integrated Sensor Underwater System) features innovative, new technologies to address the challenges of today: concise real-time tactical picture, superior sonar sensors for complex littoral water environments, full sensor-to-shooter capability, minimum operator workload with maximum performance, and an individually customised open architecture system.

AIMS (ATLAS Integrated Mission System) is an integrated mission system that covers the basic requirements of an OPV. It comprises an integrated bridge system, internal and external communication channels, baseline functions of command & control including the basic suite of weapons, as well as video and data networks (all NATO-compatible, of course).

ASCA (ATLAS Security for Coastal Areas), the effective system for coastal protection, considers the specific requirements of the diverse application environments through its extremely scalable

and modular architecture. Thanks to the versatile configuration possibilities with underwater and surface sensors, an optimum situation picture can be generated for any local and regional need.

ANCS (ATLAS Naval Combat System) is a combat system of the latest generation. Thanks to the modular structure of ANCS, it can be adapted rapidly to different ships and varying requirements. It has all the necessary interfaces to sensors, effectors and communications facilities, with which it can be integrated into network-based operations.

IMCMS (Integrated Mine Countermeasures System) is a mine warfare system comprising sensor-to-shooter functional chains in order to conduct today's main MCM techniques, i.e. mine hunting, mine sweeping and mine neutralisation. IMCMS' edge is the integration of mine hunting sonars and mine disposal systems into the combat management system, enabling the MCM team to conduct its tasks efficiently and safely.

ADLiS also offers the versatility of being a subsystem of existing combat management systems or a stand-alone single link application.

ADLiS is a Mature, Proven Multi Tactical Data Link with the Ability to Achieve a High level of Shared Situational Mission Awareness by Creating a Common Operational Picture.



ADLiS operator console

ATLAS Data Link System Experience – Tactical Communication for all Nations.

Our experience (examples)

- F125, Germany
- U214, South Korea
- K130, Germany
- U214, Greece
- U212A, Germany
- Hamina Class, Finland
- Kedah Class, Malaysia
- F124, Germany
- U209, Portugal
- U209, Turkey
- F122, Germany
- S143, Germany



ATLAS SERVICES. Naval Support – Worldwide. We Make Sure Your Systems Run Smoothly.

In the maritime sector, our customers play an essential role in securing the safety of the world's nations. ATLAS SERVICES provides the necessary logistical support. We ensure that our customers have the needed flexibility, combat effectiveness and operational readiness. Quality and reliability form the foundation of our corporate philosophy. Our wide-ranging service spectrum is designed this way. Our customers deserve nothing less.

ATLAS SERVICES means much more than just the delivery of spare parts, maintenance of products, or training in the use of our systems. ATLAS SERVICES offers a comprehensive and independent package that is available at any time and any place. In close cooperation with our clients, we put together the most suitable service concept, providing the basis on which we intensively support our components and systems over the entire life-cycle. What is more, we also offer this complete support for the products of other manufacturers – a process with which we are most familiar in our role as system integrator.

Technical Engineering

From the straightforward software update, through wide-ranging technical support in the upgrade of your ships, and up to the complete retrofitting of your systems – all of these tasks comprise a vital part of our technical competence. We will find a solution for each of your requirements.

Professional Support

Exceptional challenges, such as technical analyses, the execution of studies, as well as all other supporting technical services up to operational models for entire platforms, are fulfilled by our specialists with the very highest level of competence.

Product Support

Complex military systems, whether supplied by ATLAS ELEKTRONIK or other manufacturers, require sophisticated logistical support – during both the development and the in-service phases. ATLAS SERVICES is your competent and reliable point of contact.

Advanced Training

Knowledge is power. Training courses reflecting the state of the art are a core element of our customer care. To match the constant professional development of our service staff, we offer tailor-made training solutions for your personnel: face-to-face trainings, computer based trainings, simulation applications, and much more besides.

Contact

ATLAS ELEKTRONIK GmbH

Sebaldsbruecker Heerstrasse 235

28309 Bremen | Germany

Phone: +49 421 457-02

Fax: +49 421 457-3699

marketing@atlas-elektronik.com

www.atlas-elektronik.com



ADLiS

ATLAS Data Link System



... a sound decision